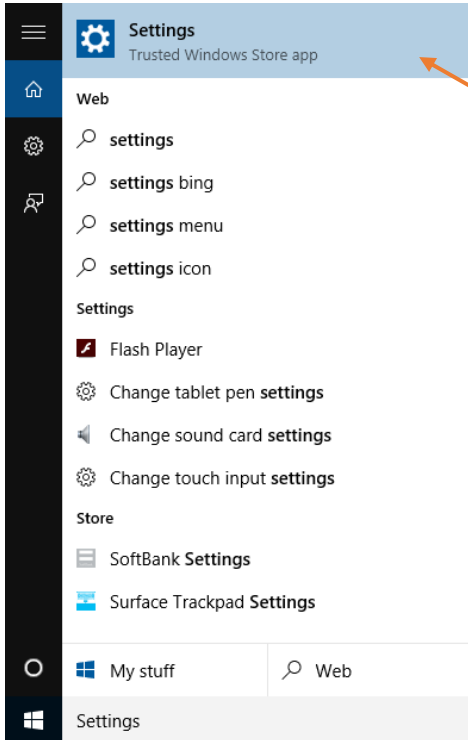


How to connect to the Project Server in Windows 10

1. Click in the “Search the web and Windows” area in the lower left-hand corner.



2. Type Settings and click on the top option Settings.

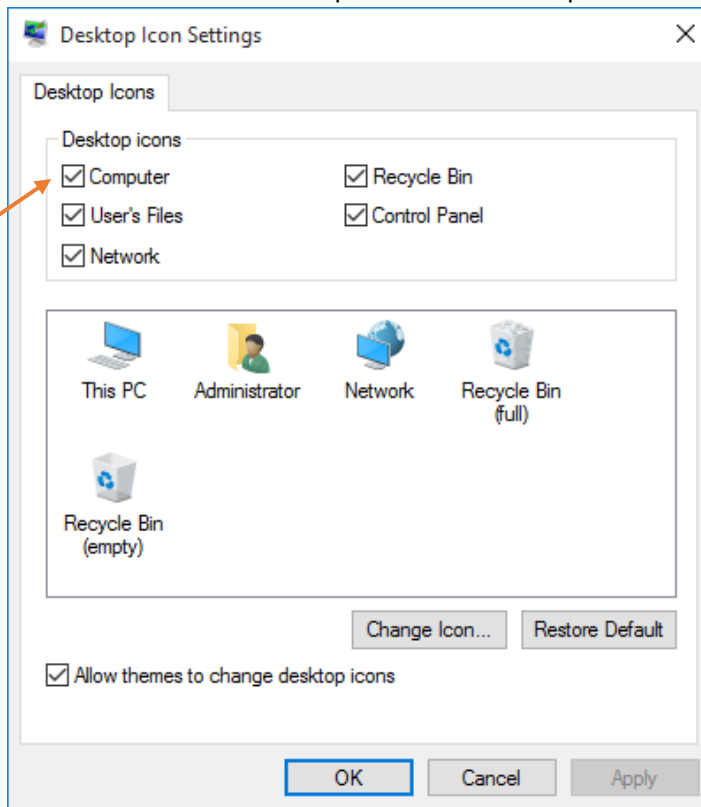


3. In the top Right-hand corner of the Settings window type Desktop Icons. Then click on Show or hide common icons on the desktop.

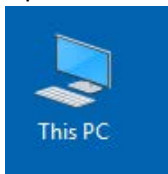


How to connect to the Project Server in Windows 10

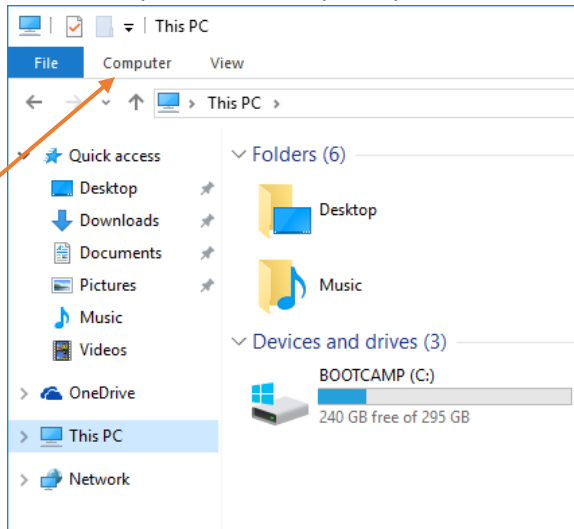
4. You will need to check Computer under Desktop icons and select OK.



5. Open This PC on your desktop.

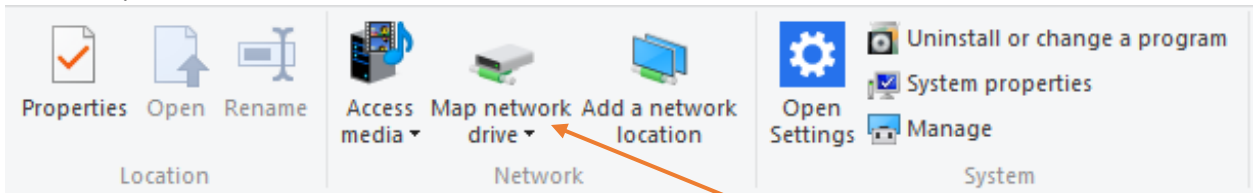


6. Select Computer on the top-left portion of the This PC window.

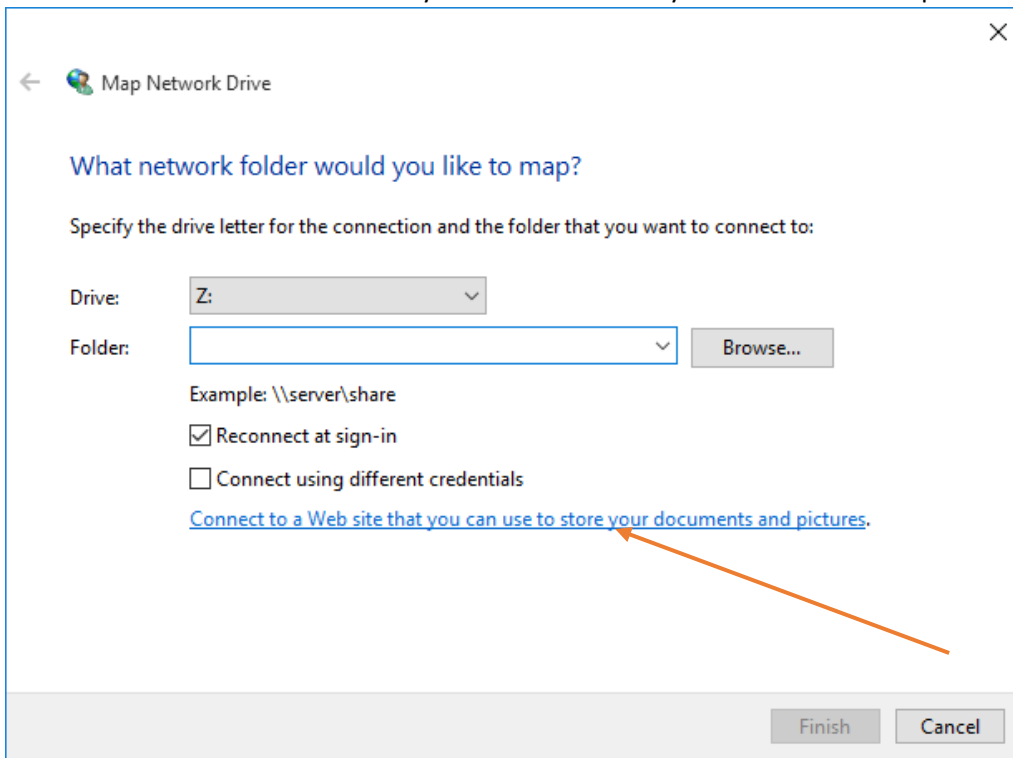


How to connect to the Project Server in Windows 10

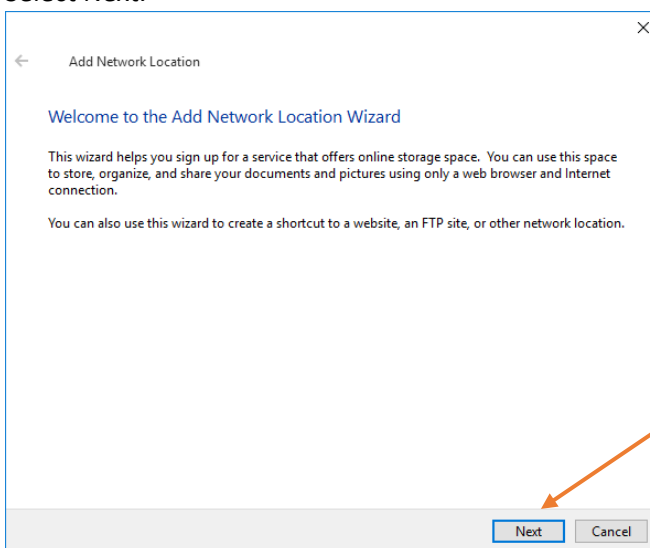
7. Select Map network drive.



8. Select "Connect to a Web site that you can use to store your documents and pictures".

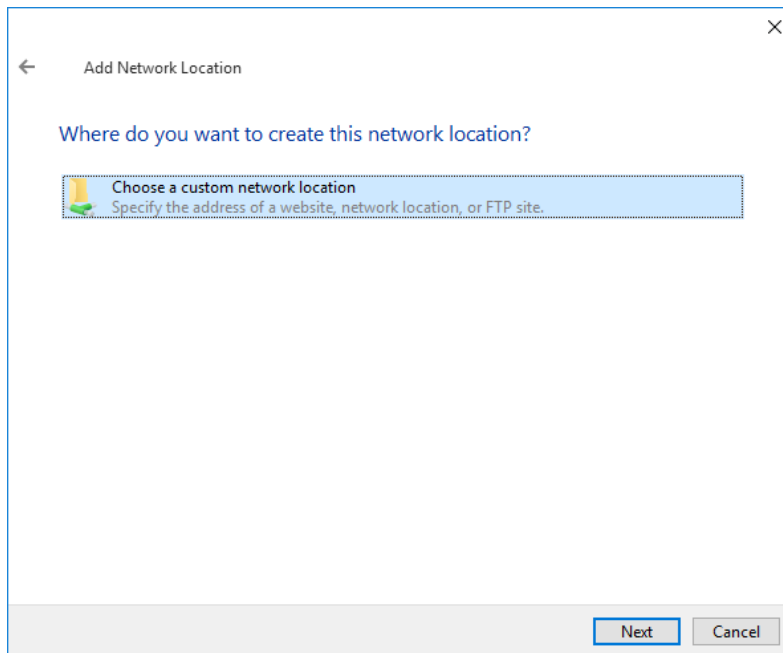


9. Select Next.

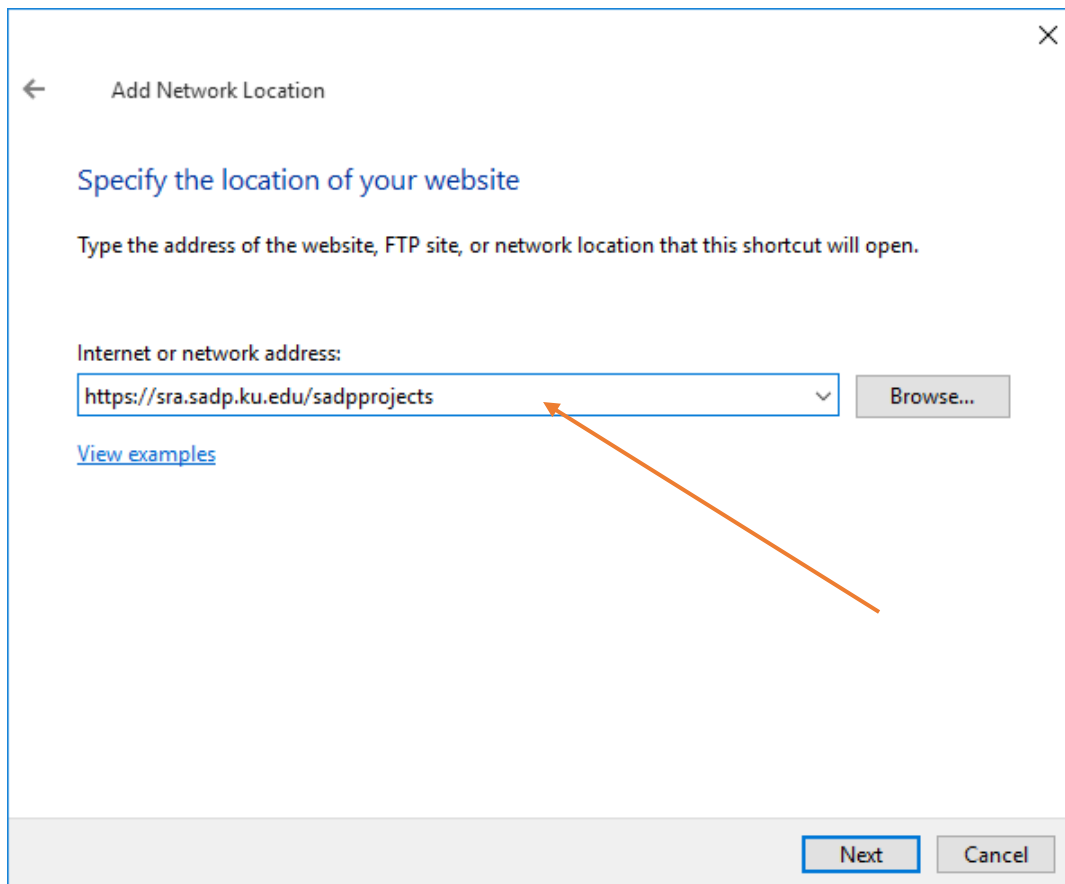


How to connect to the Project Server in Windows 10

10. Select “Choose a custom network location”. Then Select Next.

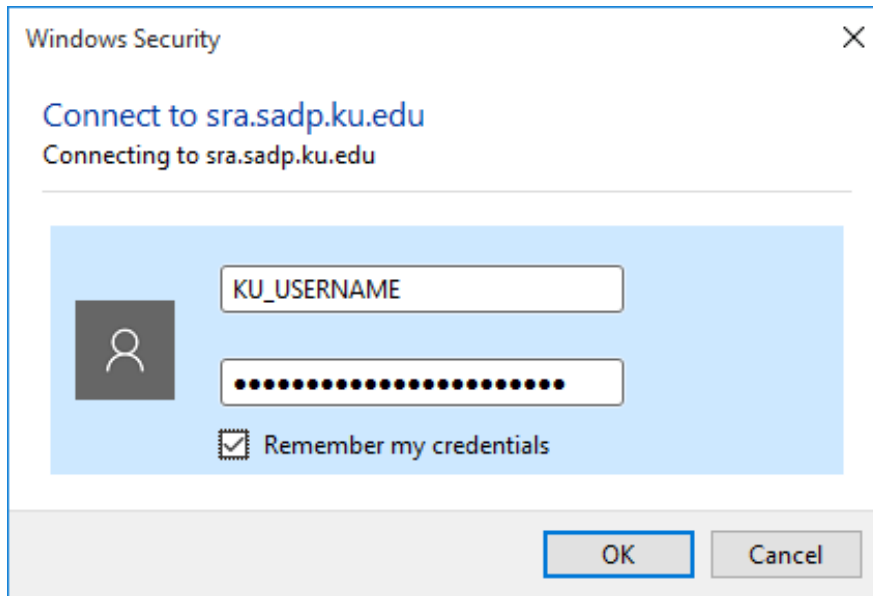


11. Under the “Internet or network address:” type **https://sra.sadp.ku.edu/sadpprojects** . Then select Next.

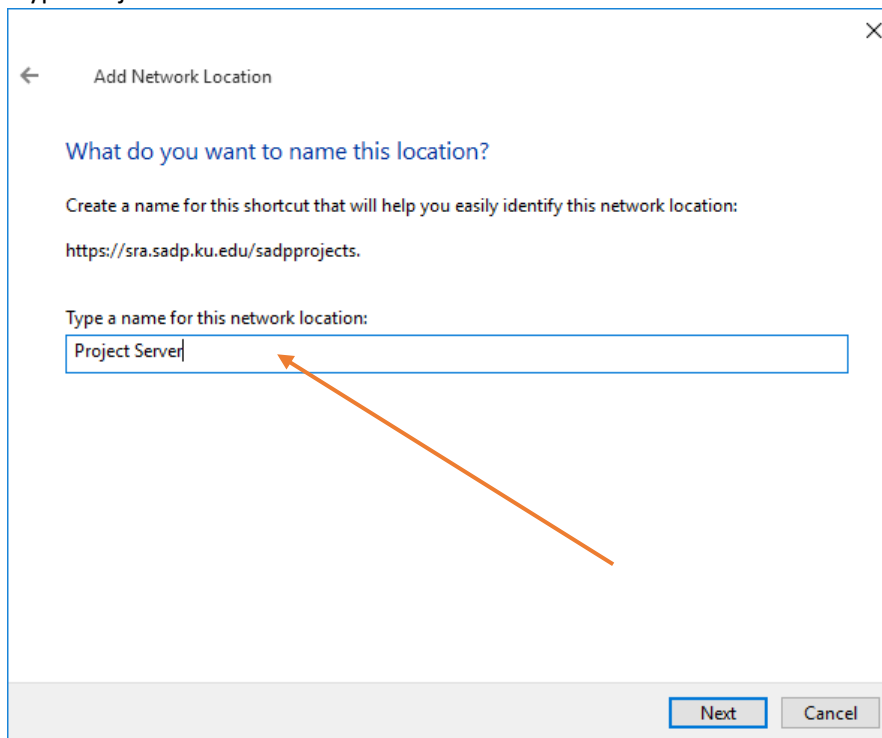


How to connect to the Project Server in Windows 10

12. Type your KU Username and password (same used to check your email). Check Remember my credentials.

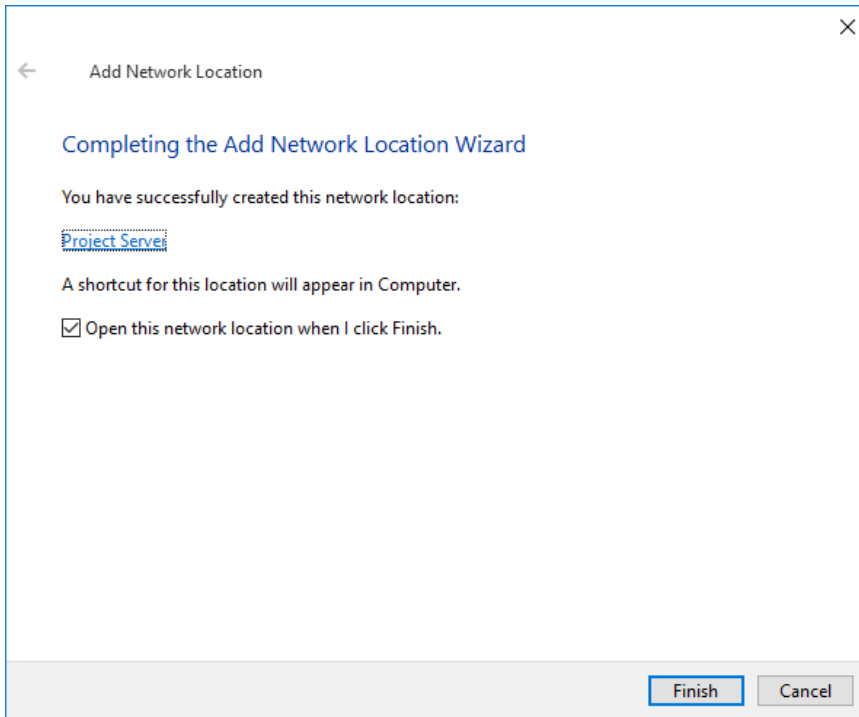


13. Type Project Server and select Next.



How to connect to the Project Server in Windows 10

14. Select Finish.



If you need to access the project server you can open This PC on your desktop and select Project Server under Network locations.

