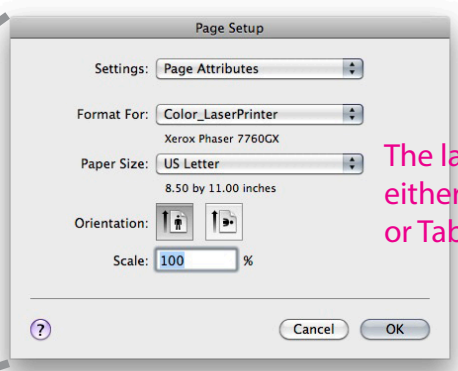
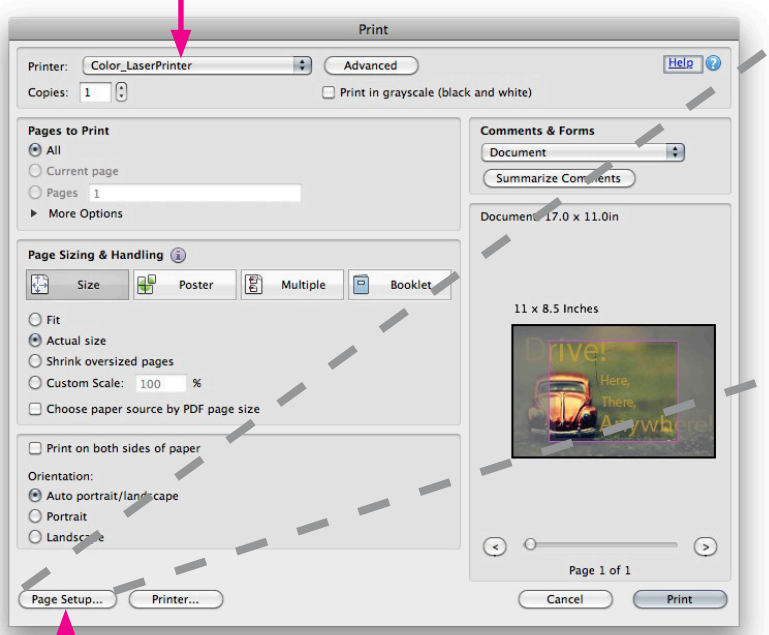


Tile printing:

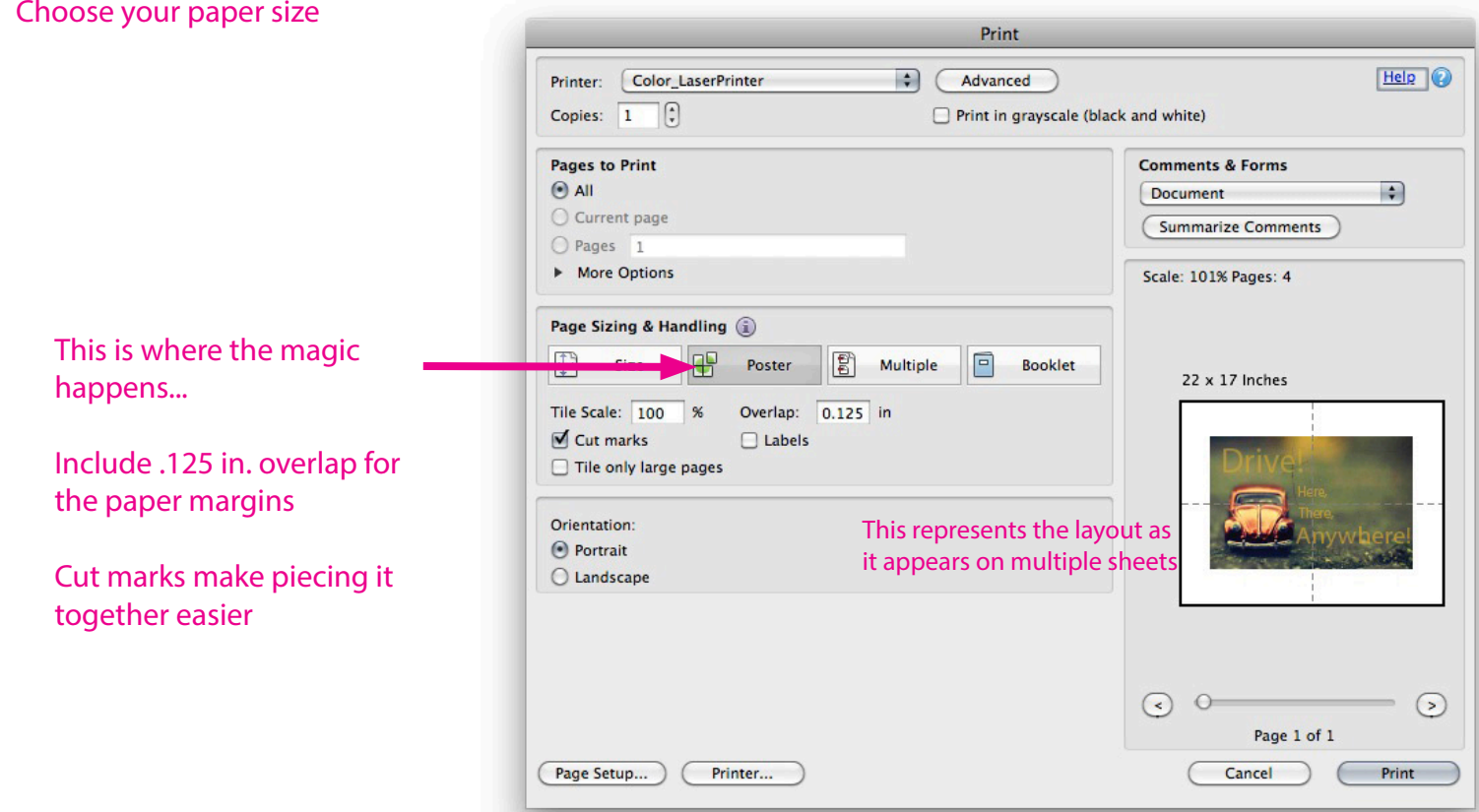
- Step 1) Create a PDF using High Quality Print settings
- Step 2) Open PDF in Adobe Acrobat
- Go to File/Print

Choose your printer



The laser printers have either Letter (8½ x 11) or Tabloid (11 x 17)

Choose your paper size



This is where the magic happens...

Include .125 in. overlap for the paper margins

Cut marks make piecing it together easier

This represents the layout as it appears on multiple sheets